

**TURCHIN CENTER
for the Visual Arts**

APPALACHIAN STATE UNIVERSITY

SCULPTING WITH PAPER

Hand Papermaking at Dieu Donn 

HODGES AND COMMUNITY GALLERY

FEBRUARY 6 – JUNE 6, 2026



CONTENTS:

01	EXHIBITION STATEMENT
03	ARTISTS IN THE EXHIBITION
44	INVITATION TO CREATE
45	BEHIND THE SCENES
47	SELECTED WORKS
51	ADDITIONAL RESOURCES
52	THANK YOU

previous and left:
Leslie Mutchler & Jason Urban
Geo Talisman (031) To Banish Convulsive Fevers, 2023

Nancy Cohen
Merge, 2018
Photo by Edward Fausty

EXHIBITION STATEMENT

Sculpting with Paper: Hand Papermaking at Dieu Donné highlights innovative relief and sculptural works—all crafted from paper—created by artists from around the world. Featuring selections from the renowned Dieu Donné residency program, this exhibition showcases the incredible versatility of paper as a medium. Together, these works celebrate experimentation, materiality, and the global community of contemporary papermaking artists.

Dieu Donné was founded in 1976 by Susan Gosin and Bruce Wineberg “to explore the untapped potential of hand papermaking as an art medium.” They had several goals for their non-profit including “introducing artists from a wide variety of practices to the creative possibilities in hand papermaking, fostering experimentation, and creating innovative works of art.”

Dieu Donné continues its extensive support of international artists by on-going collaborations, “striving to teach a new visual language and providing a transformative experience that often leads to artistic breakthroughs. Dieu Donné provides opportunities for Workspace and Lab Grant residencies, fellowships, internships, workshops, and seminars.”

The Turchin Center is pleased to present 40 of the artists Dieu Donné has collaborated with over the years. ***Sculpting with Paper: Hand Papermaking at Dieu Donné*** highlights the versatility of paper as an unexpectedly malleable medium; many of the works in the exhibition are sculptural or presented in relief showing the tensile strength of paper which is based on the arrangement and properties of the fiber used to make different kinds of papers. We hope you enjoy the wide-ranging creative expression of the artists in this special installation.

EXHIBITION STATEMENT

(CONT.)

Over the past three years, the Turchin Center has benefited from the Dieu Donné Museum Donation Program established to expand the non-profit's educational mission by introducing the art of hand papermaking to an extended audience. Donating works of paper art to museums around the world, Dieu Donné encourages a greater appreciation of hand papermaking as a fine art process. The Turchin Center has been gifted artworks from Dieu Donné Paper Mill Inc.; from the following artists: Nancy Cohen, Katherine L. DeLamater, Brock Enright, Glenn Goldberg, Carter Hodgkin, Corrinne Jones, Abby Leigh, Richard M. Polsky; and an artwork by John Shorb donated by Corrine Jones. These works are also included in this exhibition. More information about each artist can be found on the Dieu Donné website.

Many thanks to John Shorb and the staff at Dieu Donné for their enthusiastic support for bringing this exemplary artwork to the mountains of Western North Carolina.

ARTISTS IN THE EXHIBITION

Abdolreza Aminlari	Amy Jacobs
Glen Baldrige	Matthew Kirk
Aisha Tandiwe Bell	Lauren Krukowski
Lynda Benglis	Fabienne Lasserre
LaKela Brown	Abby Leigh
Beth Campbell	Jason Urban and Leslie Mutchler
Crystal Z. Campbell	Nazanin Noroozi
Nancy Cohen	Michele Oka Doner
Bethany Collins	Armita Raafat
Katharine L. DeLamater	Jonathan Seliger
Lesley Dill	Jean Shin
Ming Fay	John Shorb
Natalie Frank	James Siena
Tatiana Ginsberg	Michael St. John
Baris Gokturk	Jessica Stockholder
Ann Hamilton	Ezra Tessler
Jane Hammond	Nari Ward
Juan Hinojosa	Paul Wong
Jim Hodges	B. Wurtz
Wennie Huang	Ye Zhu

*Artists' biographies courtesy of the artist © or Dieu Donné ©.
For more information, please visit the artists' websites.*

ABDOLREZA AMINLARI

<https://www.abdolrezaaminlari.com>

Iranian-born artist Abdolreza Aminlari's sparse works on paper speak to themes of displacement and repetition. Known for his small, threaded geometric designs and use of negative space, Aminlari creates inventive, intricate compositions that seem to be part of a larger whole. The embroidered aspect of his work harkens back to his maternal relatives, who he remembers gaining meditative solace from cross-stitching Persian rugs and miniatures. The geometric patterns are often references to sacred designs from Iranian mosques, but they are made contemporary during his process of stitching. Says Aminlari, "I try to allow room for the shapes to exist. The negative space becomes a sort of breathing room, a space for contemplation."

GLEN BALDRIDGE

<https://glenbaldridge.com>

Glen Baldridge graduated from the Rhode Island School of Design in 1999 with a BFA in printmaking. He has exhibited at the International Print Center, Artists Space, EFA Project Space, and David Krut Projects. His works are included in the collections of the Metropolitan Museum of Art, Museum of Modern Art, Whitney Museum of American Art, New York Public Library, Yale University Art Gallery, RISD Museum, Library of Congress, and many other notable public and private collections. He is represented by Klaus von Nichtssagend Gallery and Halsey McKay Gallery. Baldridge currently lives and works in Brooklyn, New York.

AISHA TANDIWE BELL

<https://superhueman.com>

Aisha Tandiwe Bell is an artist whose practice is inspired by the fragmentation of multiple identities. She is the first generation Jamaican and ninth generation traceable Black American. Born in Manhattan and spending her early years in Bull Bay Jamaica as Bobo Shani Rasta, Bell creates myth and ritual through sculpture, performance, video, sound, drawing, and installation. She holds a BFA and MS from Pratt Institute and an MFA from Hunter College. Bell has received a NYFA in Performance Art/Multidisciplinary Work and has had artist residencies/fellowships at various places including Skowhegan, Rush Corridor Gallery, Abron Art Center, LMCC Workspace, Wassaic, The Laundromat Project, BRIC, Interlude, Dieu Donne, Stoneleaf and more. She has been a fellow with DVCAI on International Cultural Exchanges in several countries. Bell's works have been exhibited in numerous spaces, including The Museo De Arte Moderno's Triennial, The Jamaica Biennial, The BRIC Biennial, The Venice Biennial, MoCADA, The Rosa Parks Museum, CCCADI, Columbia College, Space One Eleven, The Corcoran, Welancora Gallery, and Rush Arts.

LYNDA BENGLIS

<https://www.pacegallery.com/artists/lynda-benglis/>

Lynda Benglis's oozing, poured latex sculptures challenged the tenets of the cool, rationalist, male-dominated Minimalist movement that dominated 1960s New York. These undulating pieces helped establish a feminine post-minimalist aesthetic. Benglis's exuberant, visceral forms straddle the line between organic figures and abstract shapes. The artist has also used polyurethane foam to create her magma-like flows and made cylindrical structures of plaster, wire mesh, and cotton that she ties into knots and paints with vaporized metals. Glitter is also prominent throughout her work. Additionally, Benglis has made wax paintings—they feature a mixture of beeswax and resin on Masonite panels, which she has marbled using a blowtorch.

LAKELA BROWN

56henry.nyc/artists/lakela-brown/information/

LaKela Brown creates relief sculptures that draw on the iconography of 1990s hip-hop culture while evoking historical forms of relief, like cuneiform tablets. Featuring gold “door knocker” hoop earrings most prominently throughout her work, Brown conveys themes surrounding the empowerment of women and coming of age. Her plaster blocks, which sometimes show symbols of pharaohs and Nefertiti, have been likened to ancient hieroglyphs and other artifacts popularized by Egyptian culture. A professor at Rhode Island School of Design, Brown received a BFA from the College for Creative Studies in Detroit and has participated in solo and group exhibitions globally, including at the Museum of Contemporary African Diasporan Arts. In addition to her use of gold jewelry, Brown also works with materials including gold-capped teeth, chain necklaces, and chickenheads, as shown in notable works like Composition of Doorknocker Earrings and Hand with Ropes, Chickenheads, and Pharaoh Heads (2018).

BETH CAMPBELL

bethcampbellstudio.com

Known for her drawings, sculpture, and architectural interventions, Beth Campbell creates works that challenge the notion of a physical world beyond our perception. Drawing upon philosophy, phenomenology and psychology, Campbell choreographs spaces, crafts uncanny objects, and maps thought. Campbell's mobiles manifest an interest in parallel realities. Conceived as 'drawings in space,' their abstract forms of bent steel and wire evoke Freud's neurological diagrams, trees, and circulatory systems, while also serving as speculative visualizations of possibility. The interplay of lines creates an optical interference effect similar to moiré patterns, causing the surrounding space to vibrate and seemingly shift. This visual contrast catalyzes the tension between physical and virtual, ordinary and surreal.

CRYSTAL Z. CAMPBELL

crystalzcampbell.com

Crystal Z. Campbell, a 2021 Guggenheim Fellow in Fine Arts, is a visual artist, experimental filmmaker, and writer of Black, Filipinx, and Chinese descents whose works center the under-loved. Campbell finds complexity in public secrets—fragments of information known by many but under-told or under-spoken. Recent projects work with archival ruptures and omissions—the 1921 Tulsa Race Massacre, Henrietta Lacks' "immortal" cell line, migration and monuments in a Swedish coastal village, gentrification via a salvaged 35mm film relic from a Black Civil Rights Theater, traces of US colonialism in the Philippines, or psycho-geographic recollections from a descendent of Exodusters. Campbell's works span installation, collaged paintings, glass, handmade paper, performance, text, and moving image.

NANCY COHEN

nancymcohen.com

Nancy Cohen's work in handmade paper and glass examines resiliency in relation to the environment and the human body. Recent solo exhibitions include *Nancy Cohen: The State We're In* at Kathryn Markel Fine Arts in New York, NY, and *Nancy Cohen: Atlas of Impermanence* at The Visual Arts Center of NJ in Summit, NJ. Recent group exhibitions include *Yvette Molina: A Promise to the Leaves* at the Tang Museum in Saratoga Springs, NY and *Transgressing Lands: Eleven Contemporary Artists Reimagine a Horizon* at The Boiler in Brooklyn, NY. Recent installations include *Once She Dries*, an experimental opera and multidisciplinary collaborative installation that was included in the International Biennial of Paper & Fibre Art in Nantou, Taiwan; and *Between Seeing & Knowing*, a collaborative installation with Anna Boothe in the collection of the Bergstrom Mahler Museum of Glass in Neenah, WI. Upcoming exhibitions include *Legacies in Paper: Nancy Cohen, Sara Garden Armstrong and Helen Heibert* at the Robert C. Williams Museum of Papermaking in Atlanta, GA and *Flow: Time, Glass and the River* at UrbanGlass in Brooklyn, NY.

Awards include six fellowships from the NJ State Council on the Arts, two from the Jersey City Arts and Culture Trust Fund, two from the Brodsky Center, The Murray Reich Distinguished Artist Award, a Pollock Krasner Foundation Grant and a Patricia Brown Specter Fellowship at MacDowell. Other residencies include Yaddo, Millay Arts, Dieu Donn , Wheaton Arts, Pyramid Atlantic, Women's Studio Workshop and The Tides Institute.

Cohen's work has been reviewed in books and periodicals, including *The New York Times*, *The New Yorker*, *The Village Voice*, *ArtNews*, *Hand Papermaking* and *Sculpture Magazine*. Current work has been featured in the blogs Romanov Grave, Artists and Climate Change, Art Spiel and Less than Half. Her work has recently been featured in *Radical Paper: Art and Invention with Colored Pulp* published by Legacy Press, 2024. Her work was featured in NJ PBS State of the Arts:

<https://www.stateoftheartsnj.com/video/nancy-cohens-atlas-of-impermanence/>.

Cohen was born in Queens, NY. She received her MFA in sculpture from Columbia University (1984) and her BFA in ceramics from Rochester Institute of Technology (1981).

BETHANY COLLINS

bethanyjoycollins.com

Bethany Collins is a multidisciplinary artist whose conceptual practice examines the relationship between race and language. Centering language—its biases, contradictions, and ability to simultaneously forge connections and foster violence—her works illuminate America's past and offer insight into the development of racial and national identities. Drawing on a wide variety of documents, ranging from nineteenth-century musical scores to US Department of Justice reports, she erases, obscures, excerpts, and rewrites portions of text to bring to the fore issues revolving around race, power, and histories of violence.

KATHARINE L. DELAMATER

katharinelarkdelamater.com

Katharine DeLamater is a hand papermaker + artist based in Brooklyn, NY. She received her MFA from the University of Iowa Center for the Book in 2020 and shortly thereafter was the 2020-2021 West Bay View Fellow at Dieu Donn  Papermill. Alongside teaching and artist collaborations, Katharine maintains her own artistic practice which includes papermaking, letterpress printing, and experimental bookbinding. Previously, Katharine worked as Art Director at Carriage House Paper. She is currently a Studio Collaborator at Dieu Donn  Papermill. An Iowa Arts fellowship recipient, Katharine worked as a research assistant to Timothy Barrett at the Oakdale Paper Research Facility from 2018-2020. After first learning about hand papermaking at Mount Holyoke College, she went on to intern at Pace Paper, Dieu Donn , and the Boston Paper Collective.

LESLEY DILL

lesleydill.net

Lesley Dill is an American artist working at the intersection of language and fine art in sculpture, printmaking, installation and performance, exploring the power of words to cloak and reveal the psyche. Dill has had over 100 solo exhibitions. Her artworks are in the collections of many major museums, including the Metropolitan Museum of Art, the Museum of Modern Art New York, and the Whitney Museum of American Art. In 2017, she was named a fellow of The John Simon Guggenheim Foundation and is a Joan Mitchell Foundation Creating A Living Legacy artist and grant recipient. Dill was the recipient of the Emily Dickinson Museum's 2019 Tell it Slant Award. In her work, Dill transforms the emotions of the writings of Emily Dickinson, Salvador Espriu, Tom Sleight, Franz Kafka, and Rainer Maria Rilke, among others, into works of paper, wire, horsehair, foil, bronze and music—works that awaken the viewer to the physical intimacy and power of language itself. Ms. Dill is represented by Arthur Roger Gallery in New Orleans. She lives and works in Brooklyn, NY.

MING FAY

mingfay.com

Ming Fay's work primarily comments upon the symbiotic relationship between humans and nature. Drawing on an extensive knowledge of both Eastern and Western horticulture and mythologies, along with his close observation of personally collected items such as fruits, seeds, and bones, Fay often reworks nature's forms in order to fabricate imaginary species. The artist explains, "Much like a scientist, I research and cultivate specific plant forms for their inherent and symbolic qualities, reinterpreting and reinventing them in my studio/laboratory greenhouse." This results in works that range from oversized plant forms, theatrical garden-like displays, or overgrown sci-fi inspired environments.

Born in Shanghai in 1943, New York City-based sculptor Ming Fay grew up in Hong Kong, moving to the United States in 1961 to attend the Columbus College of Art and Design. He received a BFA from the Kansas City Art Institute and an MFA at the University of California, Santa Barbara. Fay has exhibited extensively in the United States and abroad.

NATALIE FRANK

natalie-frank.com

In her oil-on-canvas and mixed-media paintings, Natalie Frank plumbs human nature, seeking to convey, through her roiling, lush, and visceral compositions, the complexity and mutability of identity. As she describes: "The narrative—the stories that people tell and use to construct their lives, whether it be religious, humanistic, mythical, social, was and is my entry point in painting and the figure." Frank, who has been called a "painter's painter," draws inspiration from literature and art history, and cites the Brothers Grimm fairy tales, Italian Renaissance painting, the German and Austrian Expressionists, and R.B. Kitaj as influences. Her works—ranging from small-scale portraits to large narrative scenes—are centered on the human figure, rendered semi-abstract and in heightened physical and emotional states. Frank is a storyteller. Through her bold, dramatic handling of paint, she reveals the struggle of being human.

TATIANA GINSBERG

tatianaginsberg.art

Tatiana Ginsberg studied papermaking and book arts at the University of Iowa Center for the Book and received her MFA from the University of California, Santa Barbara. In between, she spent two years in Japan researching naturally dyed papers under a Fulbright grant. Returning to the U.S. she taught papermaking, printmaking, book arts, and drawing in universities for more than a decade. As Director of Artistic Projects and Master Collaborator at Dieu Donn  , she works with other artists to make new work in handmade paper. She also edits the series *Papermaker's Tears: Essays on the Art and Craft of Paper* for The Legacy Press. Her own work combines traditional and contemporary methods of papermaking and is exhibited nationally and internationally.

BARIS GOKTURK

barisgokturk.com

Baris Gokturk is a Turkish artist living and working in Brooklyn, NY. He is a recent graduate of Columbia University's MFA program in sculpture. Recent and upcoming museum projects and exhibitions include SECCA in Winston-Salem, The Jewish Museum in New York, The Frost Art Museum in Miami, and Pera Museum in Istanbul. He also completed public commissions by Columbia University's Butler Library and The Public Art Fund in New York. Gokturk has shown his work in the United States and internationally in Germany, Spain, France, Korea, Turkey and Puerto Rico. His work has been featured in *ArtForum*, *BOMB Magazine*, and *The Brooklyn Rail* among others. Gokturk was an ApexArt fellow in Seoul, artist-in-residence at YADDO, and a participant in SOMA Mexico as well as Skowhegan School of Painting and Sculpture. In addition to his MFA from Columbia University in sculpture, he also holds an MFA in painting from Hunter College where he taught for seven years. He currently teaches at The New School and Columbia University. He also runs an art program for Johns Hopkins University's neurology department. From 2011-2015, he ran a gallery and project space with a group of artists called Heliopolis in Greenpoint, Brooklyn. He is the co-founder of Junte, an arts and culture project in Puerto Rico. He has contributed articles to Istanbul based bilingual art magazine RHsanat and the monthly political *Post-Express* since 2005.

ANN HAMILTON

annhamiltonstudio.com

Ann Hamilton creates large-scale multimedia installations that combine sculpture, architecture, video, spoken and written word, and human presence. Hamilton's immersive environments are oriented around sensory experiences in time and space; she explores the way that bodily and linguistic experiences form perceptions and memory. "What is the relationship between how our bodies know things and how we embody our knowledge through our actions and touch?" she asks. "What is the relationship between that and language?" The artist creates site-specific works, often inhabiting a space acoustically. For "phora" (2005), Hamilton used different exhibition spaces to explore the genesis of vocalization and vocal expression through sound and mixed-media installations.

JANE HAMMOND

janehammondartist.com

In her paintings and photographic prints, Jane Hammond organizes found image fragments into surreal juxtapositions, foraging flea markets, used bookstores, and antique shops for inspiration. Hammond's densely literary paintings, which she intends to make "as complicated, inconsistent, varied, multifaceted as you are, as I am, as life is," as she has said, include images of props such as masks of Einstein and King Tut, and puppet parts. During Hammond's nine year collaboration with the poet John Ashbery, he suggested titles for her paintings, including "A Parliament of Refrigerator Magnets," "Do Husbands Matter?" and "The Wonderfulness of Downtown," which served as the starting point for her compositions. Hammond also produces black-and-white photomontages that draw on elements of Russian Constructivism and Dada, which she reworks digitally, collaging, retouching, and developing shadow and tone before converting the digital file into a negative and printing the resulting image in the darkroom as a gelatin silver photograph.

JUAN HINOJOSA

juanhinojosa.com

Juan Hinojosa is a mixed-media artist who currently lives and works in New York. Constructed from found objects, his complex collage-drawings intimately challenge greed, obsessive consumption, and the social stratification of American culture. Hinojosa received his BFA from Parsons School of Design and was awarded residencies at Material for the Arts (New York), the Vermont Studio Center (Vermont), and LMCC (Lower Manhattan Cultural Council's Governors Island COVID-19 Response Residency program). His work has been featured in *The New York Times*, the *Woodside Herald*, and *Open House New York*. Hinojosa's solo exhibitions include "Blonde Ambition" at Materials for the Arts (New York), "Ready for Their Stones" at the Allegra LaViola Gallery (New York), "All Mine," Union College, Schenectady, New York and he was part of the Biennial at El Museo del Barrio (New York).

JIM HODGES

stephenfriedman.com/artists/44-jim-hodges/

Jim Hodges' works are meticulously assembled visual diaries made from familiar materials such as curtains, mirrors, artificial silk flowers, glass, silver chains, and light bulbs. In *Creep* (2009), a branch-like form gracefully stretches beyond the edges of the watermarked paper. From his complex arrangements of broken glass to life-size monochromes of black, gray, and white camouflage fabric, Hodges' delicate works explore themes of fragility and temporality in a highly original and poetic vocabulary.

WENNIE HUANG

wenniehuang.com

Wennie Huang is a teaching artist living and working in Brooklyn, NY, where she is a Part-Time Associate Teaching Professor at Parsons School of Design. She leads plein air, watercolor, and pastel workshops throughout the New York City area through non-profit art programs at the 92nd Street NY, Wave Hill, and the Pastel Society of America. She has created mixed media and site-specific installations as well as works on paper through artist residencies at the Center for Book Arts, Sculpture Space, Lower East Side Printshop, Dieu Donné Papermill, and the Ragdale Foundation. Huang is the recipient of grants from the National Endowment for the Arts, New York Foundation for the Arts, and the New School's Innovations in Education Fund, and a permanent art commission through New York City's Percent for Art Program. In 2020, she became a brand ambassador for Royal Talens North America, and her live watercolor and pastel demos appear frequently on social media and in the annual international online conventions, Watercolor Live and Pastel Live. In 2022, she received the Presidential Award from the Pastel Society of America where she is a Signature Member. Her recent work consists of works on paper and collaborations exploring relationships between identity and loss, material, landscape and collective memory. As a second-generation Asian American woman, she is interested in the impact of cultural myths on preconceptions about ethnicity and social inheritance as well as how nature, land, and the urban environment act as symbols of national identity, and private markers of time and place. By relocating these myths as visual bodies within local environments, new metaphors, meanings and narratives emerge. She has exhibited at the Hammon Museum and Japanese Stroll Garden, SUNY Cortland, Sculpture Space, Ameritas Foundation, the Center for Book Arts, Kelinert-James Gallery, Wave Hill House Gallery, The Print Center, and the International Print Center New York, among many others. At Dieu Donné, Huang spent seven days in the studio with then Artistic Director Paul Wong executing a group of cast paper hats using plaster filled Chinese straw hats as the molds. To do this, sheets of abaca paper were formed and pressed in the hydraulic press, laminated to the hats using methylcellulose as an adhesive between paper layers, and allowed to air dry. Once dry, the paper forms were removed from the hats.

AMY JACOBS

amyelizabethjacobs.com

Amy Jacobs received her MFA in Interdisciplinary Book and Paper Arts from Columbia College Chicago and studied for two years at Penland School of Craft as part of the Core Fellowship Program. Currently the Senior Director of Artistic Projects and Master Collaborator, she has been part of the Dieu Donné studio team since 2010. She has taught and led workshops at institutions including Yale University, the Museum of Modern Art, the New York Public Library, the School of the Museum of Fine Arts, Boston and the University of Georgia Studies Abroad Program in Cortona, Italy. Using a textile-based exploration of imagery, her own work embraces traditional and experimental papermaking techniques, as well as book arts and installation.

MATTHEW KIRK

mtthwkrk.org

Matthew Kirk (lives and works in Queens, NY. He has recently had exhibitions at Fierman Gallery, New York, NY; Adams and Ollman, Portland, OR; Intuit: The Center for Intuitive and Outsider Art, Chicago, IL; Louis B. James, New York, NY; Exit Art, New York, NY. His work has been published in *The New York Observer*, *Modern Painters*, and *The Wall Street Journal*, among other publications. In this series of works, Kirk uses hand papermaking to explore his Navajo heritage and the political nature of contemporary Native American culture.

LAUREN KRUKOWSKI

laurenkrukowskistudio.com

Abstracting imagery and creating patterns from her lived experiences, Lauren Krukowski mirrors the processes and aesthetics of textile traditions in print, handmade paper, and quilting. Krukowski was the 2024-2025 West Bay View Foundation Fellow at Dieu Donné Papermill. Additional awards and artist residencies have supported her work and research, including recent artist residencies at the Peninsula School of Art, GoggleWorks, and David Krut Workshop, made possible through funding from the Stanley Award for International Research Fellowship and the Joseph Roberts Foundation. Recent exhibitions include "Tacit Knowledge" at the Elizabeth Foundation for the Arts, "And, And, And" at the University of Iowa Hospitals and Clinics' Project Art Gallery, and "Seeing Through" at Dieu Donné. Krukowski earned an MFA in printmaking and papermaking from the University of Iowa in 2024 and a BFA in painting and drawing from the University of Wisconsin-Madison in 2010.

FABIENNE LASSERRE

fabiennelasserre.com

Fabienne Lasserre works across, beyond, and beside painting and sculpture, attending to the act of looking as simultaneously bodily, distracted, vulnerable, and assertive. She engages abstraction as a locus for political metaphors and as means to privilege lived and felt experience, presenting pleasure as intrinsic to knowledge and understanding. A 2019 Guggenheim Fellow, she has exhibited her work consistently in Canada, the U.S., and internationally. Her solo exhibition *Listeners* (The Athenaeum, Athens, GA; 2024) received support from the Andy Warhol Foundation for the Visual Arts. She lives and works in Brooklyn, NY, and grew up in Montreal, Quebec.

ABBY LEIGH

abbyleigh.com

Abby Leigh is an artist based in New York City. Her work is held in public collections including the Museum of Modern Art, the Whitney Museum of American Art, the Guggenheim Museum, New York, the Metropolitan Museum of Art, The Hammer Museum, and the Houston Museum of Fine Arts, among others. The artist writes: "While my work varies stylistically, my way of looking does not: I have very little depth perception. I see a layered world with flat, sometimes ambiguous, space. In keeping with such, I work in layers—be it layers of paint, of smoke, of graphite or peach pit soot, of whatever the work in front of me seems to demand. I start an abstract work randomly: making a mark with an axe, an eye dropper filled with sumi ink, or a line of smoke and I suddenly have somewhere to go. In my sledgehammer works, I work the surface until the markings form a coherent visual explanation to me. Often, I return to the same surface and I rework it, sledgehammering, axing, sanding, buffing, scrubbing, erasing, adding, or subtracting.

JASON URBAN AND LESLIE MUTCHLER

julmstudios.com

Jason Urban and Leslie Mutchler (JULMstudios) have been working collaboratively since 2012; they live and work in Brooklyn, New York. As a collaborative duo, they exercise a coequal approach to art and life that focuses on research and problem-solving. With a relationship of physical to metaphysical in mind, their practice is increasingly about the natural world and the way digital technologies influence and distort our relationship to nature.

The pair has had solo exhibitions at Atelier Circulaire (Montreal, Canada), the Neon Heater (Findlay, OH), Eastern Edge (St. Johns, Canada), Center for Book Arts (New York, NY), Monaco (St. Louis, MO), the Delaware Contemporary (Wilmington, DE), NARS Foundation (Brooklyn, NY), Grizzly Grizzly (Philadelphia, PA), The Print Center (Philadelphia, PA), Centre for Fine Print Research (Bristol, UK), Space Gallery (Portland, ME), among others. They have been awarded numerous residencies including SaikoNeon in Fujikawaguchiko, Japan, Edition/Basel in Basel, Switzerland, Cork Printmakers International Visiting Artist Residency in Cork, Ireland and Dieu Donn   Workspace Residency in Brooklyn. Both are affiliated with Pratt Institute where Mutchler is Chair of the Foundation Program and Urban teaches publishing courses in the Communication Design program.

NAZANIN NOROOZI

nazaninnoroozi.net

Nazanin Noroozi is a multi-disciplinary artist incorporating moving images, printmaking and alternative photography processes to reflect on notions of collective memory/history, instability and displacement. Noroozi's work has been widely exhibited at galleries and museums across the world including The Print Center (PA), SPACES, Cleveland (OH), Athopos, Athens (Greece), Golestani Gallery, Dusseldorf (Germany), Immigrant Artist Biennial, Baxter Camera Club NYC, Noyes Museum of Art, NY Live Arts, and School of Visual Arts, among others. She is the recipient of awards and fellowships from New York Foundation for the Arts Fellowship (film & video), Marabeth Cohen-Tyler Print/Paper Fellowship at Dieu Donné, Artistic Freedom Initiative, Elizabeth Foundation for the Arts, and Mass MoCA residency. Her works have been featured in various publications and media including, *British Journal of Photography*, *Die Zeit Magazine*, *BBC News Persian*, *Elephant Magazine*, and *Financial Times*. Her works are in public collections such as the New York Public Library, Harvard Art Museum, Arizona State University and University of Michigan. She is an editor at large of *Kaarnamaa; A Journal of Art History and Criticism*. Noroozi lives and works in New York City.

MICHELE OKA DONER

micheleokadoner.com

Michele Oka Doner has been called "nature's scribe." The sculptures and decorative objects—candelabras, tableware, and accessories—she creates recall organic forms, resembling bark, tree roots, microscopic molecules, and the human body. Over the course of her career she has created several important pieces of public art, including *Radiant Site* (1991), a groundbreaking tile installation in the New York subway system, and *A Walk on the Beach* (1995), a two-and-a-half-mile-long concourse at the Miami International Airport of dark terrazzo inlaid with bronze and mother-of-pearl. A recurring theme in her work is the marine flora and fauna of her native Miami. "Miami Beach is primal in my work," she has said. "It was a place that fascinated and nurtured me, with the forces of nature, the dramatic thunderstorms, the extraordinary light."

ARMITA RAAFAT

armitaraafat.com

Armita Raafat is a New York based sculptor and Installation artist. She was born in Chicago and raised in Tehran. She has been living in the U.S. for the past 15 years. She holds a BFA from Al-Zahra University in Tehran and an MFA from the School of the Art Institute of Chicago. She has been a recipient of awards and residencies including LMCC swing space, AIM at the Bronx Museum of the Arts, Elizabeth Foundation for the Arts studio space, a 2014 Peter S. Reed Foundation grant for sculpture, and a 2014 NYFA fellowship for Sculpture/Crafts.

Raafat's work has been presented in exhibitions nationally and internationally in venues such as the Museum of Contemporary Art in Chicago, ThreeWalls Gallery, Chicago, The Bronx Museum of the Arts, New York, The Noyes Museum of the Arts, New Jersey, Pavel Zoubok Gallery, New York, Dorsky Gallery, New York, Garriss & Hahn Gallery, New York, Kepco Center, Seoul, Korea and Al-Zahra University in Tehran. Raafat also exhibited with the "Fertile Crescent: Gender, Art and Society" organized by the Institute of Women & Art at Rutgers University in 2012.

JONATHAN SELIGER

jonathanseliger.com

Jonathan Seliger is an artist living and working in Brooklyn, NY and Columbia County, NY. Merging interests in the lineages of Pop Art, Minimalism, Conceptual Art, and Trompe L'oeil, his subjects span iconic haute-couture shopping bags and ubiquitous, throwaway commercial packaging such as milk, juice and Chinese takeout containers, high and vernacular graphic design. He draws inspiration from ephemera, the signs and detritus of everyday contemporary living and seeks to find poetry in the desirable, the discardable and the familiar.

He has had over 30 solo shows around the world and has participated extensively in group exhibitions. His works are included in many prominent public and private collections, having exhibited his work domestically and internationally in commercial galleries, not-for-profits and museums for more than 25 years.

JEAN SHIN

jeanshin.com

Jean Shin is known for her sprawling installations and sculptures that transform accumulations of discarded objects—like Mountain Dew bottles, mobile phones, and 35mm slides—into powerful monuments that interrogate our complex relationship between material consumption, collective identity, and community engagement. Often working cooperatively within a community, she researches the history of use, circulation, and environmental impact of these discarded objects in a labor-intensive and participatory process. Shin has presented solo exhibitions at institutions including the Museum of Modern Art in New York, the Philadelphia Museum of Art, the Smithsonian American Art Museum in Washington, D.C., and the Asian Art Museum in San Francisco. Her body of work includes permanent public artworks, including at the MTA's second avenue subway in New York City.

JOHN SHORB

johnshorb.com

John Shorb is an artist and currently serves as Strategic Advisor to Dieu Donné. He was previously the Executive Director at Dieu Donné and has worked for non-profits for the past 20 years, specializing in organizational strategy and culture. He first took an introductory class years ago at Dieu Donné, experiencing the expertise and excitement of the studio first-hand. John is also an artist, having completed residencies at Blue Mountain Center and Penland School of Craft.

JAMES SIENA

milesmcenery.com/artists/james-siena

Responding to a set of parameters, what the artist calls “visual algorithms,” and following them to their conclusion, James Siena creates drawings, prints, and paintings that combine mathematical precision with hand-drawn variation. Siena’s works, characterized by repetition and dense with lines, range from the purely abstract to the vaguely biomorphic to the figurative. Known primarily for his concentric or repeating contours and corners, a 2008 exhibition marked a departure, featuring greater irregularity of line and a number of drawings of human faces.

MICHAEL ST. JOHN

dieudonne.org/michael-st-john-paper-variable-2012

American artist Michael St. John, who began his career as an abstract painter in the 1980s before moving on to found-object installations in the decade that followed, uses art as a way to comment on contemporary culture. His most recent works focus on the democratization of images by combining propaganda shots of smiling presidents with Google-searched girly photos and the types of everyday imagery that we often overlook (bathroom graffiti, stickers on notebooks, lost dog signs). His canvases combine photocopies and found images with painted material in the Trompe l'oeil style of 19th-century painter John Peto; his works simultaneously evoke Robert Rauschenberg's combines, teenaged bulletin boards, and the artists' studio itself. "Like watching the news," St. John has said of his information-saturated works, "you are left to wonder what's real and what's not."

JESSICA STOCKHOLDER

jessicastockholder.info

Jessica Stockholder uses discount store-bought and mass-produced materials to build her monumental sculptures and installations, which the *Wall Street Journal* has called "Frankensteinian." By constructing works that present carefully choreographed formal elements, Stockholder says that she aims to "present the material world in a way that is understandable." Her works are rich with color, often coated in bright and plasticky paint.

EZRA TESSLER

ezratessler.com

Ezra Tessler lives and works in Brooklyn, NY. Recent solo presentations include *Where the Stress Galls* at AD Gallery (NYC, NY), *Small Cottage* at Hudson House (Hudson, NY), and *An Angle to the Place I Live In* at Tops Gallery (Memphis, TN). His work has been included in group shows at Kate Werble Gallery (NYC, NY), The Green Gallery (Milwaukee, WI), The Landing (Los Angeles, CA), and Jack Barrett Gallery (New York, NY), and has been written about in *The Brooklyn Rail*, *The New York Times*, and *Artnet*. Tessler is the recipient of a Jacob Javits Fellowship, a Joan Mitchell Foundation Grant, a Pforzheimer Foundation Fellowship, and has been an artist-in-residence at the University of Tennessee at Knoxville, the Elizabeth Murray Foundation, Ox-Bow, Hewnoaks, and the Workspace Program at Dieu Donn  . He has taught at the School of Visual Arts (NY, NY), Columbia University (NY, NY), and elsewhere.

NARI WARD

nariwardstudio.com

Using found objects and materials collected from his urban neighborhood, Nari Ward creates sculptural installations that subvert the original purpose of the items shown. For example, in *Palace LiquorsouL* (2010), Ward rearranges the letters of the title in a neon liquor store sign, illuminating only "S-O-U-L" while leaving the remaining letters unlit and upside down. Through such unexpected compositional arrangements, Ward enacts a transformation of everyday objects into visual markers rich with symbolic and narrative implications.

PAUL WONG

northamericanhandpapermakers.org/hall-of-champions/paulwong

handpapermaking.org/magazine-articles/conversation-with-paul-wong-what-defines-a-national-treasure

Paul Wong was the Artistic Director at Dieu Donn  from 1978 to 2017, guiding and assisting over 1,000 artists and collaborating one-on-one with 400 artists such as Lesley Dill, Jim Hodges, and Do Ho Suh, among many others. Paul was the recipient of the Joan Mitchell Foundation Painters and Sculptures Grant in recognition of his work as an individual artist. He uses the papermaking process that he developed at Dieu Donn  in his own work to create major installations and works in paper for exhibitions at institutions such as the Plains Museum, Fargo, and the Neuberger Museum of Art, Purchase College, State University of New York.

B. WURTZ

bwurtz.com

risdmuseum.org/art-design/collection/untitled-2005874

In 1973, Bill Wurtz—better known as B. Wurtz—made a text drawing titled *Three Important Things*, which simply read: “sleeping, eating, keeping warm.” Since then, the vast majority of Wurtz’s works reference at least one of those three essential activities. Wurtz is best known for standing and hanging sculptures from discarded common objects like food wrappers, shoelaces, plastic bags, and locks. He says that the unremarkable quality of these materials is what attracts him, once saying: “Looking at the Universe begins with really seeing the everyday things right in front of one’s nose.” Critic Roberta Smith agreed, calling him “a master of the unassuming, if not completely disguised, artwork.”

YE ZHU

ye-zhu.info

Based in Brooklyn, NY, Zhu is an interdisciplinary artist focused in painting, public art, and social practice. Zhu has had solo exhibitions at DIMIN Gallery (2023) and Harkawik Gallery (2022) in New York, NY, and Moskowitz Bayse (2021) in Los Angeles, CA; a comprehensive solo at the Andrew Freedman Home in Bronx, NY (2022); exhibited in group shows at The Sugar Hill Museum in Harlem, NY (2022-23); Gavlak Gallery in LA (2023); Galerie Marguo in Paris, France and NADA New York and Miami (2022, 2023); Harper's Gallery (2023, 2021) and James Fuentes (2021) in NY; created a tribute art installation for healthcare workers in the Yale School of Medicine, New Haven, CT (2022); designed a billboard at Kingsgate Project Space in London, UK (2021); and designed two large-scale public art installations: one in Strafford, NH called A Universe and the other in Governors Island, NY titled CONSTELLATION (2021). Zhu is a founding and leading member of Haven Arts Park (2020-2023), whose mission is to remediate a contaminated land into a healing-garden art-park (recipient of an Andrew Mellon Foundation grant, 2022-2023). Zhu has been the subject of interviews for publications in the New York Times, Curator Guide, and Arts Council of Greater New Haven.

INVITATION TO CREATE

Check out these two videos of exhibiting artists Paul Wong and Jessica Stockholder making paper at Dieu Donn  by clicking the image or video title below:



Jessica Stockholder: Master Papermaker Paul Wong | Art21



Making Paper like Virginia Jaramillo with Paul Wong | MOCA Chicago

Try it!

Here's a simple way to make paper at home

Materials:

- Water
- Recycled paper (newspaper, magazines, tissue paper, paper bags)
- Window screen or embroidery hoop with cotton fabric or mesh
- Plastic tub, bathtub, or sink
- Towel or washcloth
- A blender

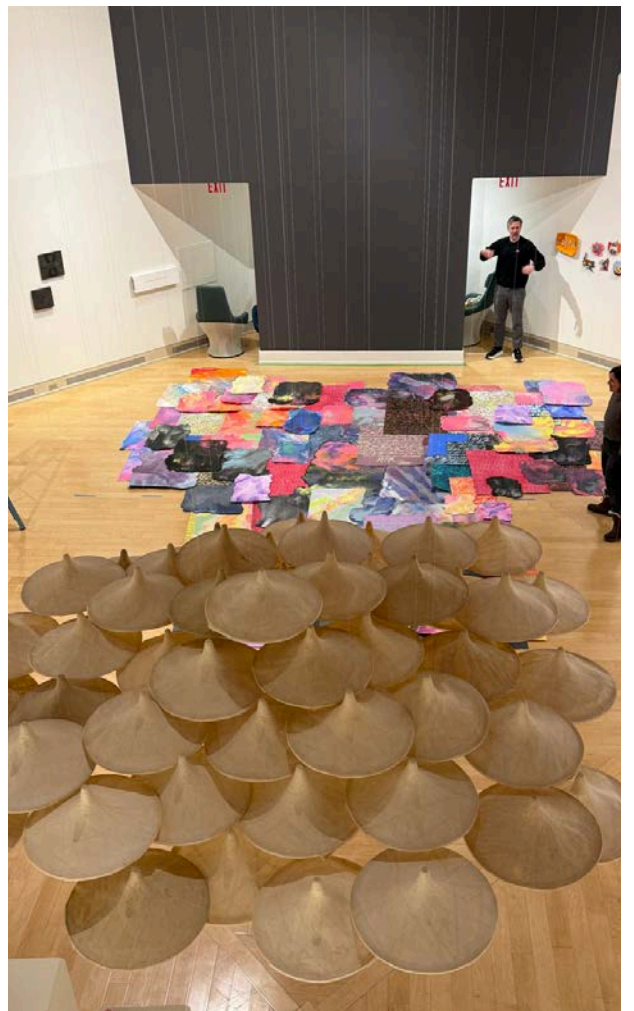


Steps:

1. Rip the paper into small pieces
2. Fill the blender halfway with water and add a handful of paper pieces
3. Run the blender on a low speed until the mixture is smooth. Add water if the pulp gets too dry (you don't want to burn the motor on your blender!).
4. Place your window screen on top of a plastic tub, your sink, or in a bathtub.
5. Pour the pulp thinly and uniformly across the screen or use your hands to create an interesting shape!
6. Place a towel on top to absorb the extra water, while also pushing the water through the screen into the tub.
7. Place one hand firmly on top of the towel while you flip the screen over onto a table or countertop.
8. Remove the screen and leave the pulp to dry, undisturbed, for about a day. The thicker the paper, the longer it will take to dry.

BEHIND THE SCENES





SELECTED WORKS IN THE EXHIBIT



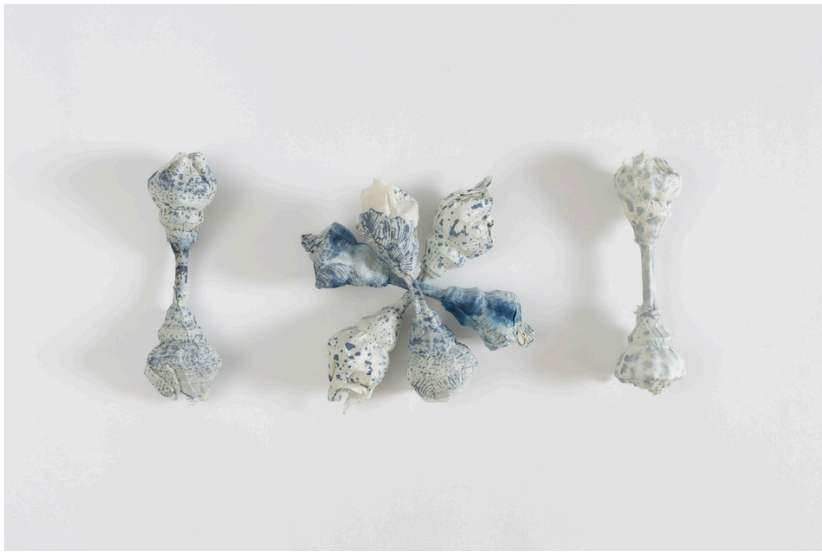
Leslie Mutchler & Jason Urban
Geo Talisman (031) To Banish Convulsive Fevers, 2023
 Digital print and collage on handmade abaca paper
 Courtesy of the artists



Nancy Cohen
Merge, 2018
 Pulp on handmade paper
 Photo by Edward Fausty
 Courtesy of the artist



Nazanin Noroozi
False Dawn 0024, 2025
 Pulp screen print and thermal emergency blanket embedded in handmade abaca paper
 Courtesy of the artist



Tatiana Ginsberg
Vajra/Doorknobs (Indigo), 2019
 Kozo paper, indigo
 Courtesy of the artist



Lauren Krukowski
Meadow Constellation Quilt (Daylight View), 2025
 Sewn handmade paper with blowouts and
 pulp painting (pigmented abaca, cotton,
 and linen fibers)
 Courtesy of the artist



Wennie Huang
Between Heaven and Earth [detail from below], 2003
 Cast abaca paper, methyl cellulose (rice paste), wool,
 and monofilament
 Courtesy of the artist



Crystal Z. Campbell
Pagkupkop, 2025
 Abaca, manila envelope, manila rope, capiz shells, and
 other mixed-materials
 Courtesy of the artist

Fabienne Lasserre
Are (White, Brown, Red, Aqua, Yellow), 2013
 Pigmented linen paper and cotton tubing
 Courtesy of the artist



ADDITIONAL RESOURCES

DIEU DONNE DIEUDONNE.ORG/

WEBSITE / DIEUDONNE.ORG/WORKSPACE

DIEUDONNE.ORG/GLOSSARY

INSTAGRAM / INSTAGRAM.COM/DIEUDONNEPAPER/?HL=EN

YOUTUBE / YOUTUBE.COM/C/DIEUDONNEPAPERMILL

LINKEDIN / LINKEDIN.COM/COMPANY/DIEU-DONN%C3%A9/

FACEBOOK / FACEBOOK.COM/DIEUDONNEPAPERMILL



THANK YOU

FROM THE TURCHIN CENTER FOR THE VISUAL ARTS

The Turchin Center for the Visual Arts at Appalachian State University engages visitors from the university, community, nation and beyond in creating unique experiences through dynamic and accessible exhibition, education, outreach and collection programs. These programs inspire and support a lifelong engagement with the visual arts and create opportunities for participants to learn more about themselves and the world around them.

Appalachian
STATE UNIVERSITY